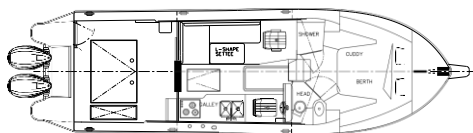


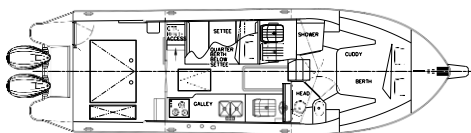


# EAGLECRAFT 36 CRUISER

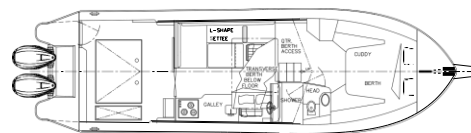
EAGLECRAFT BOATS ARE CUSTOM DESIGNED AND UNIQUE TO YOU. WORK WITH OUR DEDICATED AND SKILLED TEAM TO DEVELOP THE ULTIMATE CRUISER, FISHING MACHINE, OR MULTI-PURPOSE ADVENTURE VESSEL TO SUIT YOUR NEEDS AND LIFESTYLE.



Base Platform  
Layout



Layout Option A  
(Quarter Berth)



Layout Option B  
(Transverse Berth)

## SPECIFICATIONS

**Length (bow to swim grid):** 36'9

**Beam:** 11'4"

**Weight:** Approx 16,000- 18,500 lbs

**Fuel:** 300 US Gal Outboards/ 180-300 US Gal Diesels

**Water capacity:** 60 US Gallons

**Holding tank:** 35 US Gallons

**Accommodations:** Seating for 6 and Sleeping for 4-6

## FEATURES

Spacious cuddy cabin with Island berth configuration

Main cabin seats 6 with optional quarter berth under L shaped settee. Settee converts to additional berth

Well appointed cabin interior with custom interior, upholstery, and counter tops

Custom designed galley cabinetry and layout  
State of the art sound proofing materials Diesel furnace and bus heater / defroster

3000 watt inverter/ battery charger system with agm batteries, dual engine start batteries.

Shore power with galvanic isolator with Smart Plug and Cord

8 "Bow Thruster optional

L.E.D lighting

Electric Windlass with anchor package

## CONTACT US



BOATS@EAGLECRAFT.COM



(250) 286-6749



2177 ISLAND HWY, CAMPBELL RIVER, B.C.  
CANADA, V9W 2G6

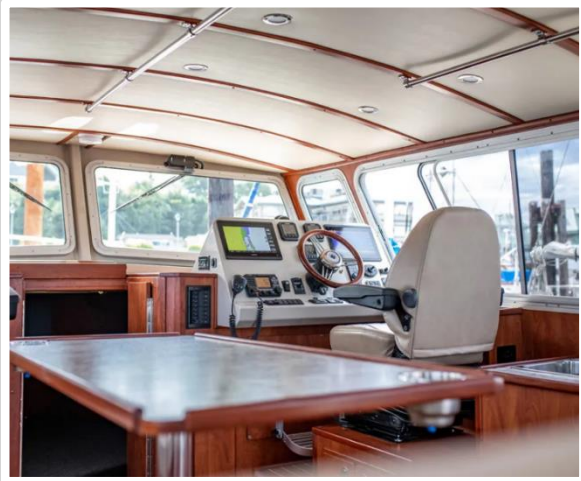


# EAGLECRAFT DIFFERENCE

## CONSTRUCTION

**Custom, high quality, commercial grade construction with heavy gauge aluminum construction methods**

- Each Welder/Fabricator is Canadian Welding Bureau certified in aluminum welding
- Constructed to ABYC standards (where applicable)



## BESPOKE EXPERIENCE

**Custom designed to meet your needs with our "in house" design team**

- Designed to be the ultimate cruiser, fishing machine or multi purpose adventure vessel unique to you
- Your choice of finishes, colors, and equipment
- Experience of working with our dedicated and skilled team to create and build your ultimate vessel

## DESIGN

**Shares design heritage with our regarded commercial vessel designs with safety, performance, strength, & durability in mind**

- Several layout options available all with centerline queen size berth with separate shower and head
- 2nd berth layouts available
- Excellent and predictable seakeeping characteristics with exceptional performance
- Designed for twin outboards or single or twin diesel stern drive with SeaKeeper and generator available
- Sound mitigation and insulation materials used throughout for enhanced interior environment
- Diesel Hydronic heat system with defrost system and hot water capability



## CONTACT US



BOATS@EAGLECRAFT.COM



(250) 286-6749



2177 ISLAND HWY, CAMPBELL RIVER, B.C.  
CANADA, V9W 2G6



## HULL & SUPERSTRUCTURE

- 36' LOA x 11'4" beam hull. Fabricated with 1/4" 5086 alloy bottom & side plate, polyurethane insulation, 7 welded cleats
- Deep transverse frames every 18" to 26" welded at every longitudinal stringer & gunwale
- Keel doubler 1/4" 2" x 2" angle welded on full length of keel
- Soundproof hull with acoustic materials cuddy cabin and under main cabin sole.
- Log skegs
- Forward leaning cabin. Includes insulation with synthetic wood grain paneling with wood trim, paint on aluminum surfaces.
- Commercial grade windows—3 sliding
- High Profile Cuddy Cabin design
- Outboards - 300 US Gal/ 1135 Liter Aluminum Fuel tank
- Diesel- 190-300 US Gal Aluminum Fuel tank depending on engine size
- 60 US gal/ water tank with gauge
- (2-3) of 2000 gph bilge pump w float switch
- 40" extended hardtop with drainage for cabin roof
- 70 to 84 Sq ft of aft deck with self bailing drainage
- Aft Cockpit lazarette storage - large locker, lid with gas struts, in cockpit sole with overboard drainage
- Transom door
- 1" aluminum bow railing extending part way down cabin
- Extended swim platform with telescoping ladder
- Bottom Paint and Non skid Paint systems

## GALLEY/ MAIN CABIN

- Your choice of with synthetic wood grain paneling with wood trim, counters, and cloth upholstery color options
- Dinette, seats 4, sleeps 2, with cloth seating cushions ( table convert additional berth)
- Premium suspension helm & co-pilot seats with adjustable travel & height
- Custom galley cabinetry designed to fit your needs
- 2 burner electric induction cook top
- Microwave Package with outlet and below counter cabinet
- 7.0 ft 12/110vlt Refrigerator/ Freezer - S.S.
- stainless steel sink, with pull out single lever faucet
- LED lights on dimmer switch, switchable to red
- LED courtesy lights
- (2) USB outlets
- Storage compartment in cabin sole
- Ventilation Vent
- CO Sensor

**Includes 1 day of EagleCraft factory vessel training**

## ENGINE/ MECHANICAL/ SYSTEMS

- Twin Outboards—Yamaha 425 XTO or Mercury V10 400 hp or V12 600 Verado's
- Diesel Power - Single Volvo Penta D6 440 DPI or Twin Volvo Penta D4 320 DPI or Twin Volvo Penta D6 440 DPI
- Fuel water separator filters
- Steer by wire system
- Electric trim tabs
- 11 US gal/ 45 Liter S.S. Hot water heater 110 vlt / engine
- 17,000 btu hydronic diesel furnace
- Defrost dash cowling system for forward windshield
- Windlass with foot pedals & helm controls, plow anchor, 50' 5/16" Chain, 300' nylon rode
- 8" 12 volt Commercial Bow Thruster with AGM battery

## ELECTRICAL SYSTEM

- 3000 watt inverter( 12 vlt to 120 vlt) & battery charger with remote panel
- 12 volt system with switches/ fuses
- Shore power 120 vlt /30 amp panel with breakers, 50' smart cord, 3 110vlt outlets, galvanic isolator
- automatic charge relays with manual over ride
- Helm mounted Remote Battery Switches for House and Start battery systems
- (2-3) AGM starting batteries 31 Series,
- (4) AGM house batteries 6 volt
- Tinned Marine Grade wiring with labeled heat shrink connections

## NAVIGATION

- Richie compass with light
- S.S. air horn
- VHF Radio with 8' antenna & AIS system (Class B - transmit and received networked to Garmin Displays)
- LED Navigation lights
- LED Bow Docking light, Remote Spotlight ,Cockpit spreader light
- 2 Wipers with washer system
- Low Profile Radar Arch on cabin roof

## CUDDY CABIN/ HEAD

- Island style berth, laminate bulkheads, hull & deck insulation with high quality hull liner & Soft touch headliner.
- Queen size memory foam mattress with storage under
- Hanging closets and storage
- Your choice of with synthetic wood grain paneling with wood trim
- Head with Vacuflush toilet with 28 US gal holding tank and overboard discharge, Vanity with sink, port hole, Ventilation Vent, LED lighting, with hot and cold shower fixture, drainage,
- 19" x 19" hatch with screen & shade
- LED lighting with courtesy light

## CONTACT US



BOATS@EAGLECRAFT.COM



2177 ISLAND HWY, CAMPBELL RIVER, B.C.  
 CANADA, V9W 2G6



(250) 286-6749



# POPULAR CUSTOM OPTIONAL EQUIPMENT

## EXTERIOR OPTIONS

- Walk-around deck layout
- Walk-thru side door opening in cockpit
- Hull & cabin solid color wrap
- EagleShade sun shade
- Upgrade to high bow railings
- Aft Deck railings
- Aft Deck folding bench seat with removable cushions
- Synthetic exterior non-skid decking
- Anchor Wash down
- Trailer ready option- Folding mast and lower cabin height
- Removable cabin roof access ladder

## ENGINE/ MECHANICAL/ SYSTEM OPTIONS

- Increase Outboard Fuel tank depending on Outboard engine sizing
- Increase Diesel Fuel tank when twin diesels selected
- 2nd helm controls with steering mounted on aft console
- Joystick docking System- Yamaha, Mercury or Volvo
- Automatic Outboard Flushing System
- diesel generator
- SeaKeeper 3
- Increase furnace to 30,000 btu's ( required for second berth)
- Air conditioning
- Upgrade Std trim tabs to automated interceptor system
- Additional 120 volt A.C. outlets
- (2 ) 190 watt solar panel with charge controller
- Water maker 14 US gal hr with automated controls
- Increase freshwater tank size
- Digital Switching for 12 volt system
- Lithium-Ion House Battery system
- Portable Fridge Freezer in storage
- Upgrade microwave to convection microwave unit

## DAVIT AND DINGHY / MOUNTS

- (9') aluminum rigid/ inflatable hull, 300 lbs hinged davit w electric winch, roof cradle, bridle

## SAFETY PACKAGE

- 6 Person Life raft with hydrostatic release mounted on cabin roof
- 6 Adult Keyhole Life vest, Flare kits,(5) 5/8" x 20 ft braided lines, (3) G5 fenders w lines, life ring w line, (2 )Fire Extinguisher 5# Dry,

## INTERIOR OPTIONS

- Second berth - Quarter Berth ( Layout A)
- Second berth - Transverse Berth ( Layout B)
- Enclose Second berth entrance for privacy
- Change traditional dinette settee to "L shaped" settee
- Upgrade finishes to soft touch material at Cuddy berth and Second berth areas
- Upgrade to Corian counters in galley and head
- Upgrade upholstery to synthetic leatherette material
- Window coverings and valances

## ELECTRONICS

- Garmin 12" chart plotter w sonar, 18" fantom x radar dome, transducer, Garmin Grid
- Increase Chart plotter size to 16" display
- Additional 12 " Garmin display
- Additional 16 " Garmin display
- AIS system ( transmit and received networked to Garmin Displays)
- Stereo Fusion AM/FM unit with Bluetooth, USB, AUX with (6) Fusion speakers & sub, (2) JL AUDIO speakers on aft deck
- Remote vessel monitoring system for Bilge Pump, Batteries, Temperature, Shore power, & vessel position
- Night vision added to Garmin System

## FISHING PACKAGE

- Kicker Package- Yamaha/Mercury 25 hp Kicker extra long shaft, (Twin engine outboards or single diesel only)
- Fish box built in deck or in transom
- (2) 12 vlt Scotty downriggers electrical, Pot hauler
- 8 Aluminum rod holders across the transom and/or cabin roof extension
- Burnewiin thru gunwale rod holders with cleaning table
- Custom Tackle center
- Raw water wash down system, 6 gpm / 70 psi, cockpit outlet, hose, nozzle
- Fresh water wash down outlet in cockpit, connected to fresh water system, hose, nozzle

## CUSTOM OPTIONS NOTES

**Additional Custom Options & Equipment Available Upon Request**

**All vessels are custom designed to fit our customers specific needs**

*(Specifications & Options are subject to change without notice)*

## CONTACT US



BOATS@EAGLECRAFT.COM



2177 ISLAND HWY, CAMPBELL RIVER, B.C.  
CANADA, V9W 2G6



(250) 286-6749

